

# School of Rocks

WITH IMPECCABLE UPTOWN TASTE—AND FASHION INSIDER EXPERIENCE—LINDA FARGO, SENIOR VICE PRESIDENT, FASHION DIRECTOR AT BERGDORF GOODMAN, SELECTS THE BEST OF FALL'S GLITTERING BAUBLES



Fargo in her office

**How would you describe your style?** Eclectic, combining a modern sensibility with quirky vintage accents.

**And your signature accessories?** Strong jewelry, red lipstick, and my silver hair—with whatever haircut Edward Tricomi gives me.

**Whose style inspired you most?** Millicent Rogers, Katharine Hepburn, and Marella Agnelli.

**Do you have any shopping weaknesses?** I've always loved Tony Duquette's gem-studded pieces as well as bold, eccentric costume jewelry.

**As a Bergdorf Goodman insider, you've already gotten a sneak peek at fall styles. What's at the top of your must-have list?** Alexandra Neel's flat, suede, over-the-knee boot and Proenza Schouler's zip bootie. And I want bags—plural, especially a new black-and-white luggage set from T. Anthony.

**Sounds like a well-thought-out list. Ever overindulged in a big-ticket splurge?**

I bought an Azzedine Alaïa suit when I was 25 years old—and too young to afford it.



Tony Duquette



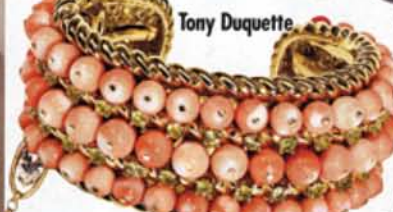
T. Anthony



Kentshire

Kentshire

Tony Duquette



Tony Duquette

**Clockwise from top left:** Faux-pearl-and-paste necklace, **Miriam Haskell at Kentshire at Bergdorf Goodman, NYC**, \$2,800, visit [kentshire.com](http://kentshire.com). Crystal roundlink necklace, **Trifari at Kentshire at Bergdorf Goodman, NYC**, \$1,275, visit [kentshire.com](http://kentshire.com).



Macklowe Gallery

Faceted-citrine-and-flourite ring, **Tony Duquette**, price upon request, collection at Bergdorf Goodman, NYC. Coral-bead cuff with faceted peridot, **Tony Duquette**, price upon request, at Tony Duquette, L.A. Blue-sapphire-cabochon-and-diamond bracelet, circa 1940s (shown with detachable clip brooch), from **Macklowe Gallery, NYC**, price upon request, call 212-644-6400. Midcentury gold, platinum, and diamond polished link bracelet, **David Webb from Macklowe Gallery, NYC**, price upon request, visit [macklowegallery.com](http://macklowegallery.com).



Macklowe Gallery

Leather-trim canvas train case, **T. Anthony**, \$895, call 800-722-2406. Citrine-and-briolette-sapphire necklace, **Tony Duquette**, price upon request, at Tony Duquette, L.A. For details, see Shopping Guide.



Fargo and a few fall necklaces